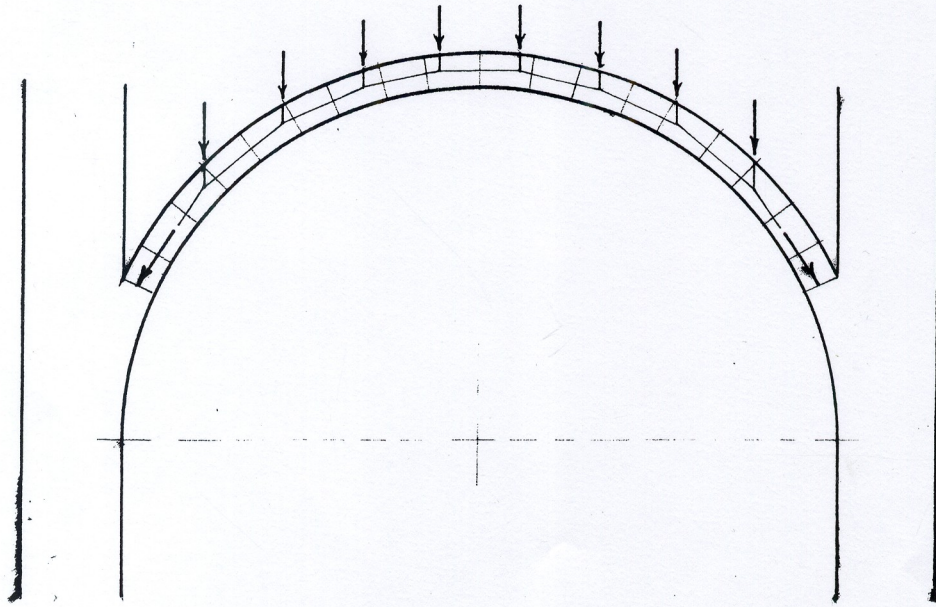
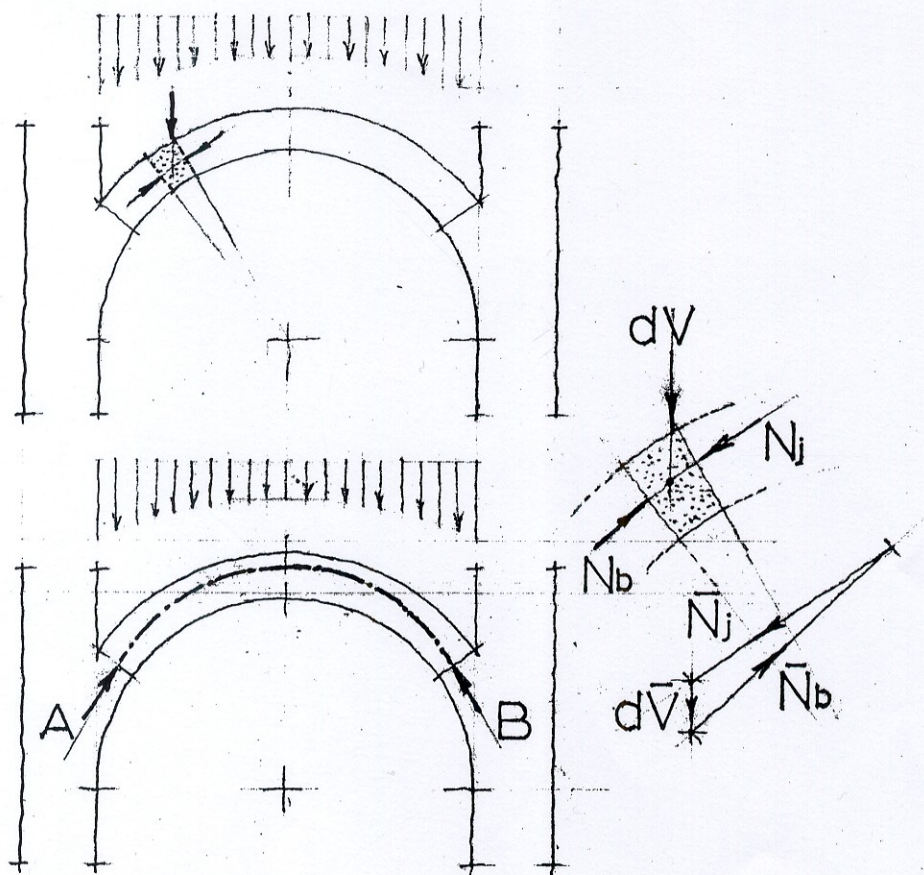


Udwan

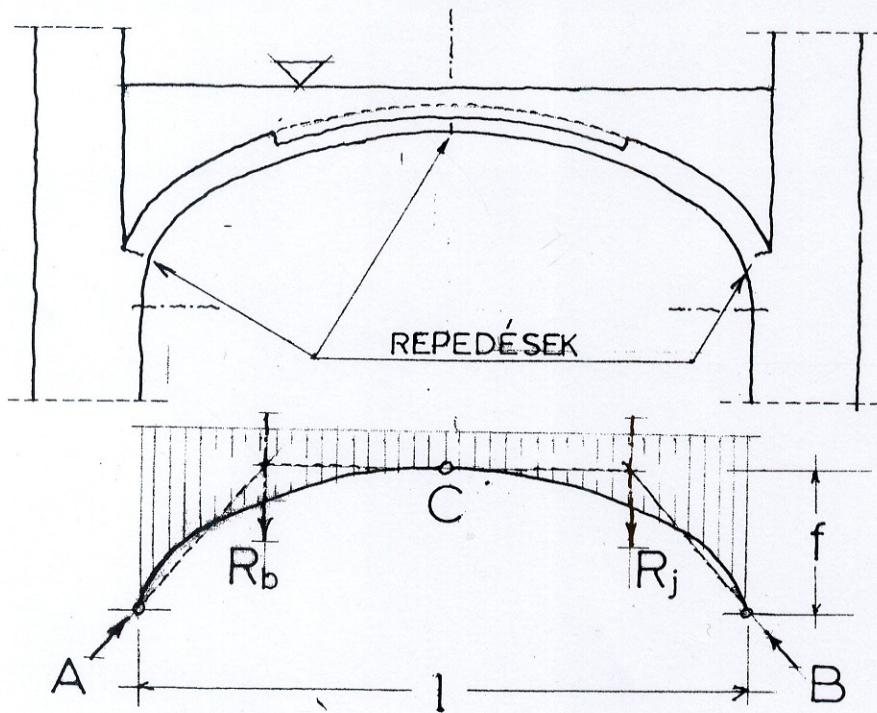
nta.



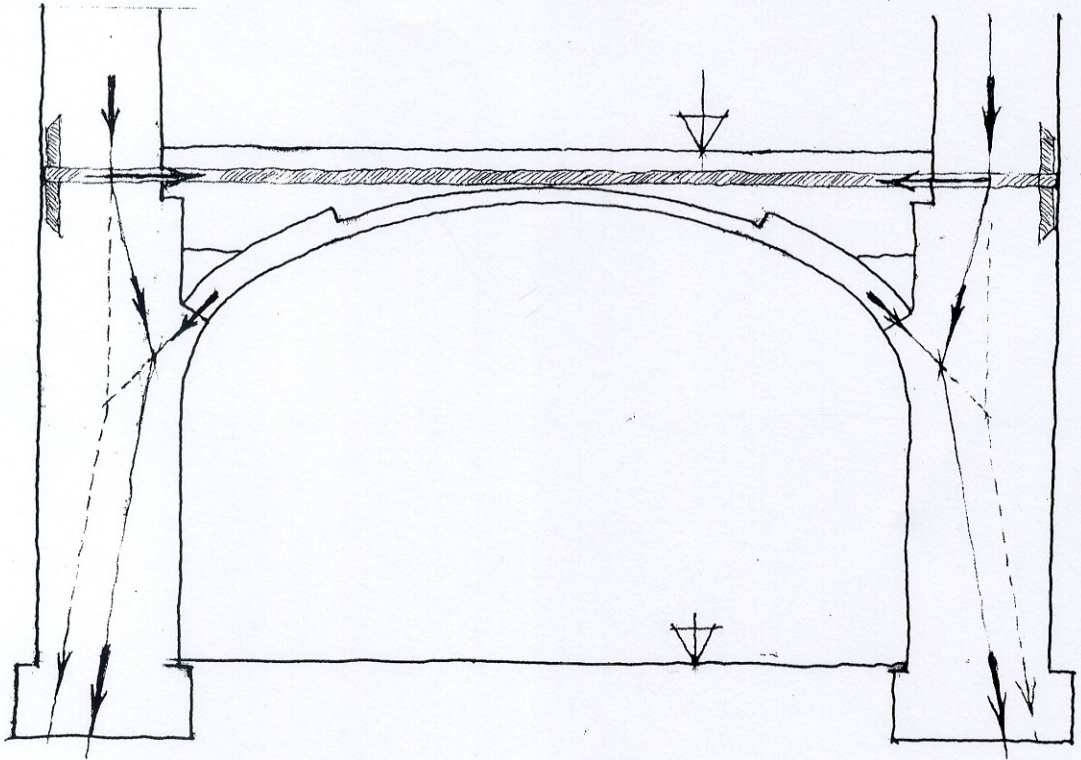
1.1. ábra Falat közé befeszítő boltívet.



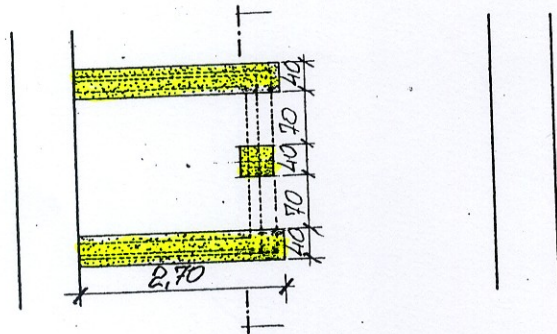
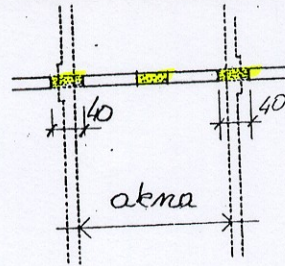
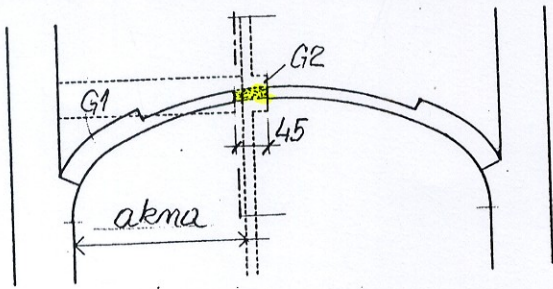
1.2 ábra A boltozat elemi darabjénak az egyensúlyi és a nyomási vonal.



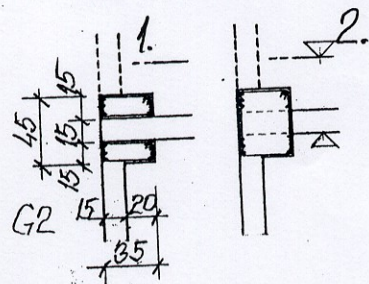
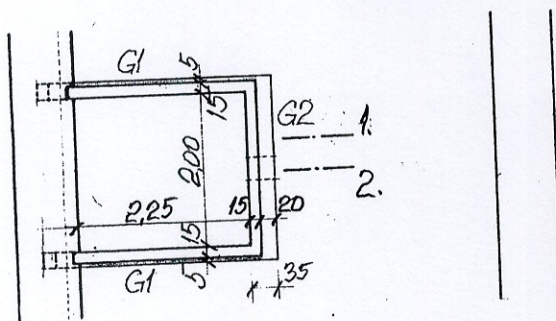
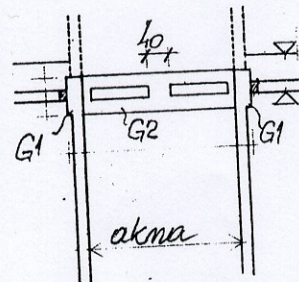
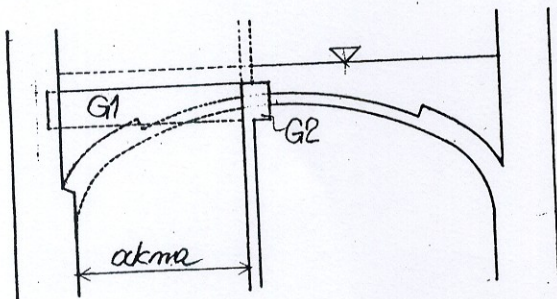
4.1. ábra. A dongaboltozat váll- és zárvadékosan
 és megnyíló repedések miatt a szelvést
 háromcsuklós ívtartóként kezelhető.



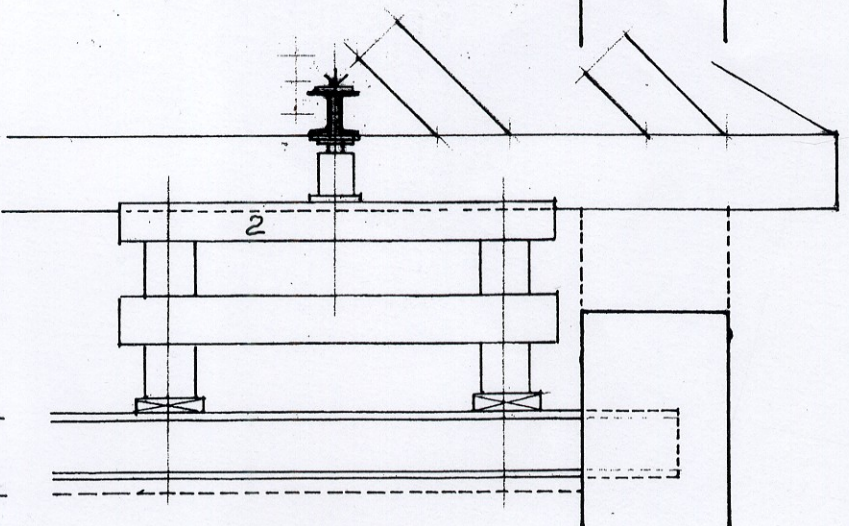
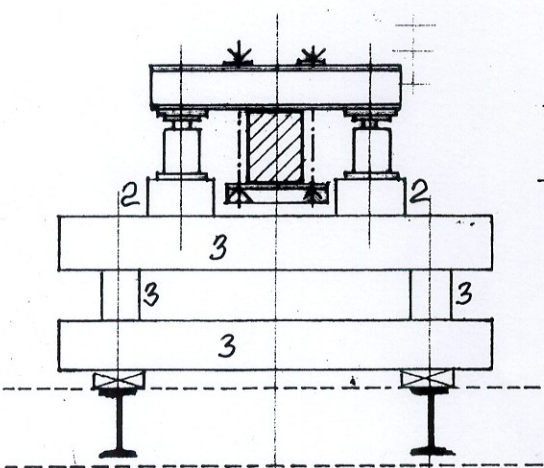
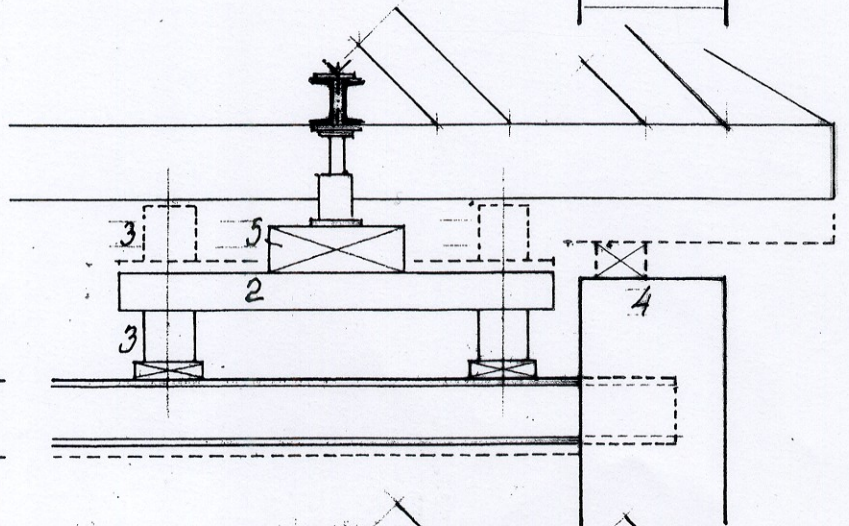
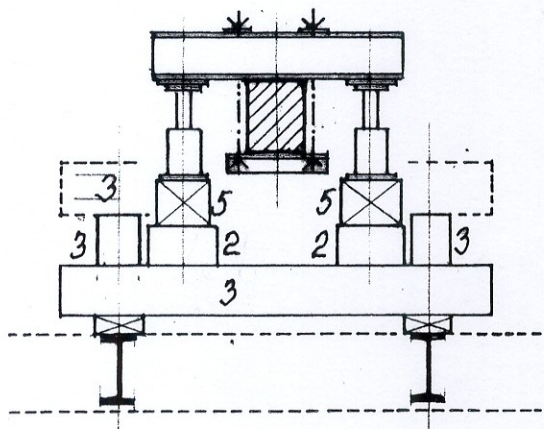
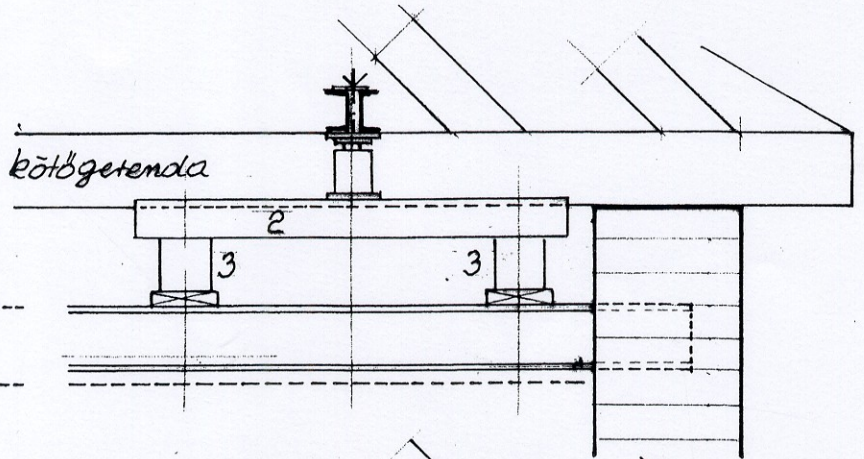
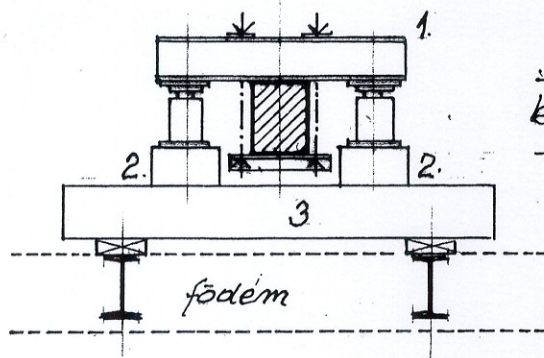
4.6 ábra A boltozat fölé helyezett vas-
vas működése

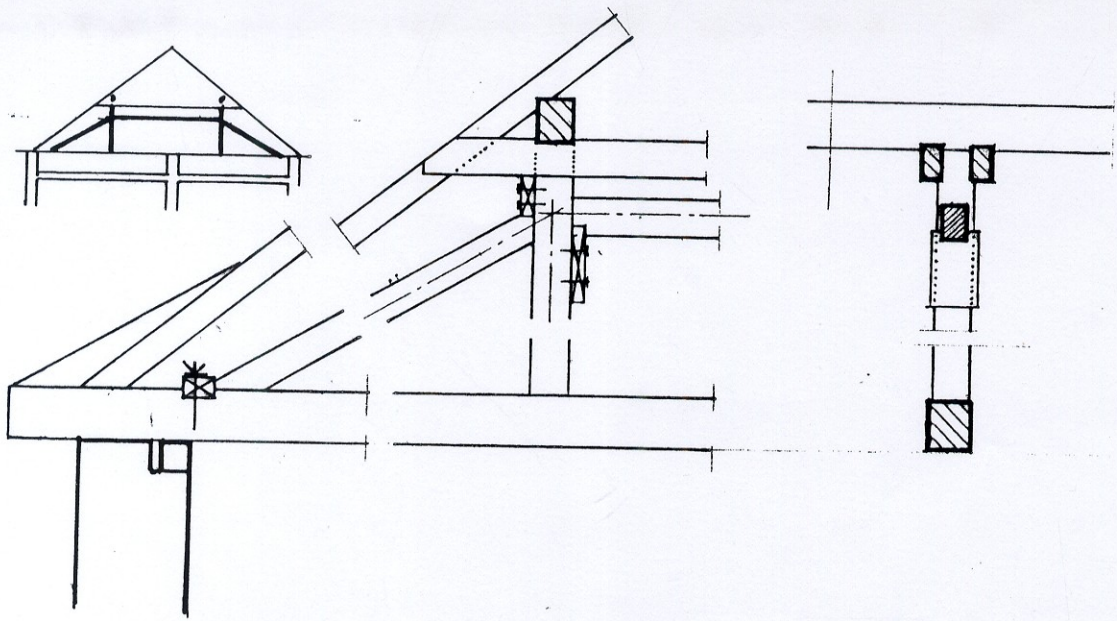


5.30.A

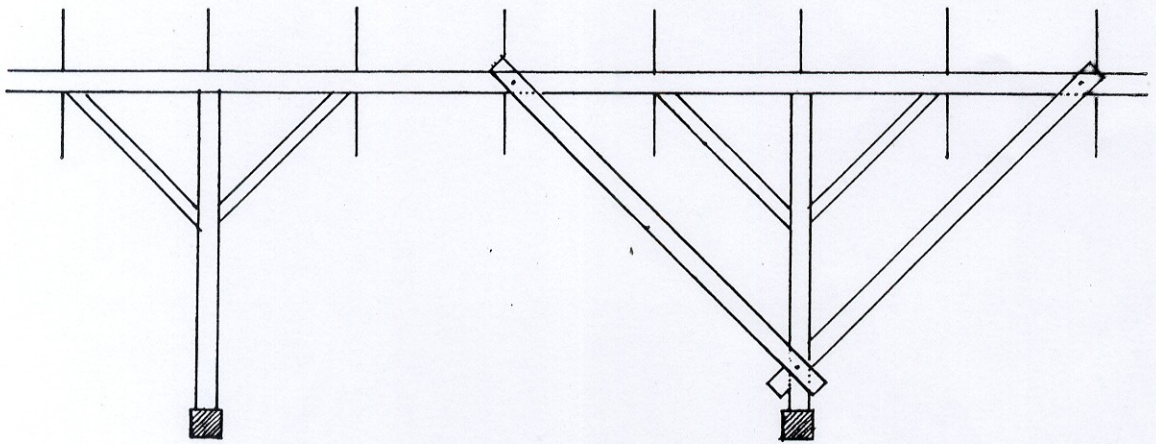


5.30.B

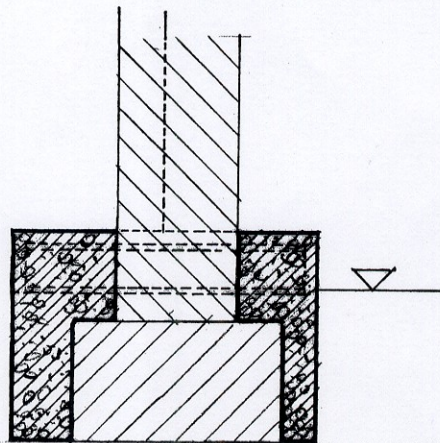
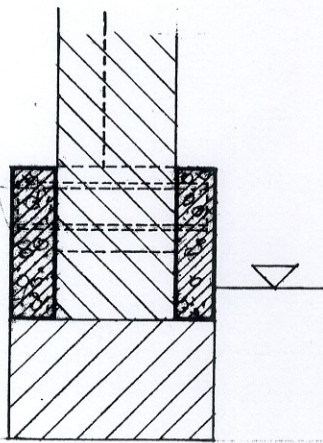
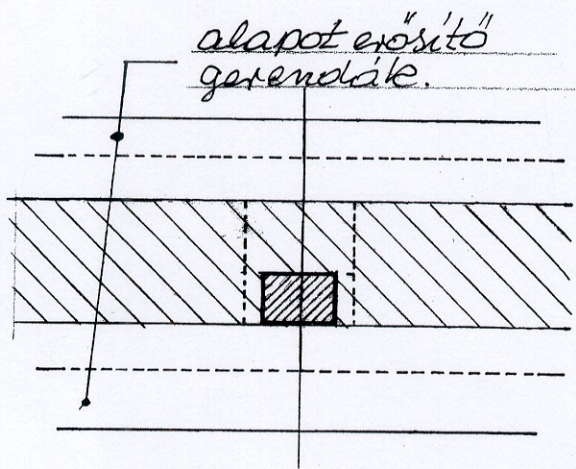
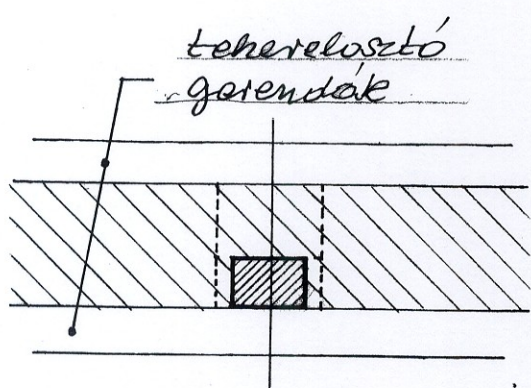
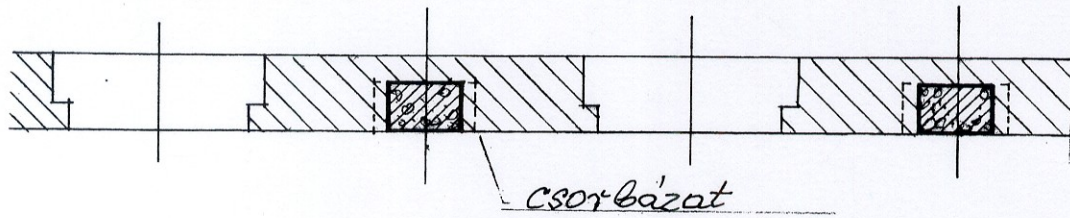


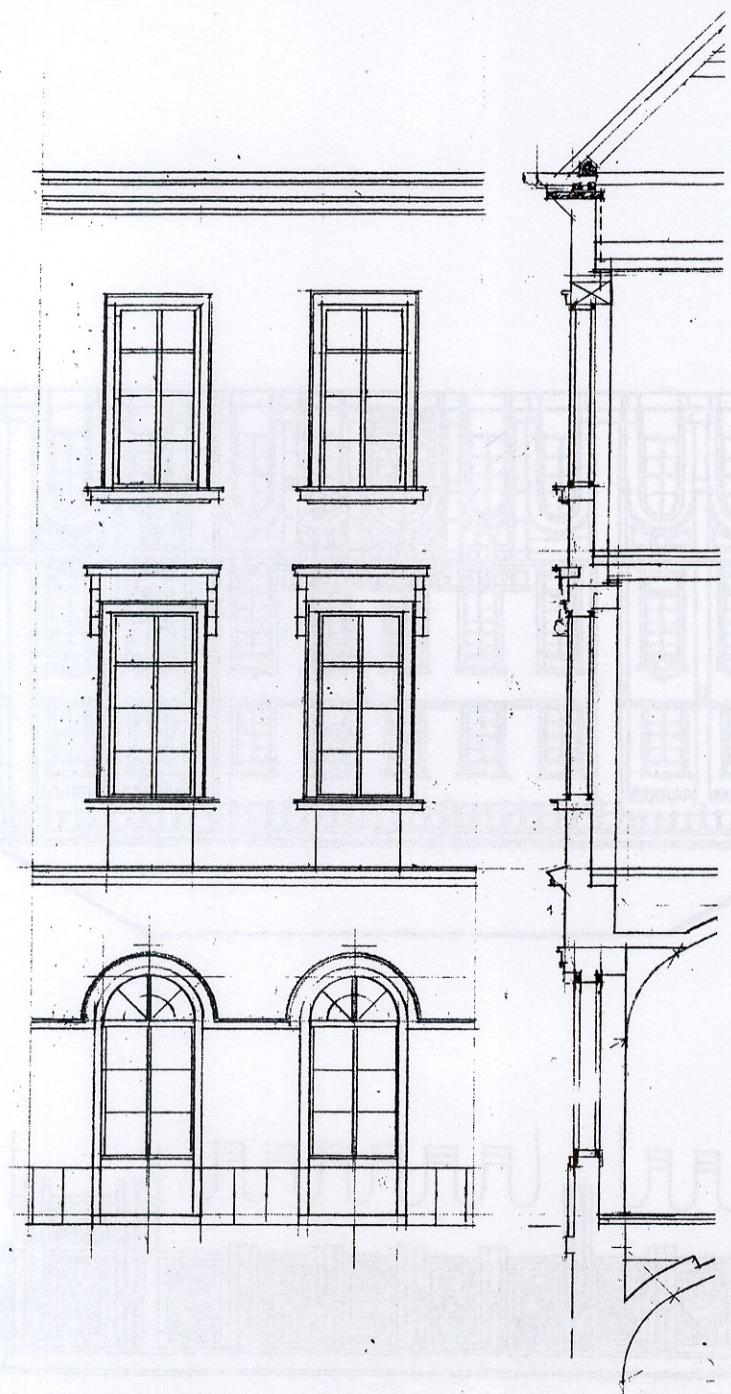


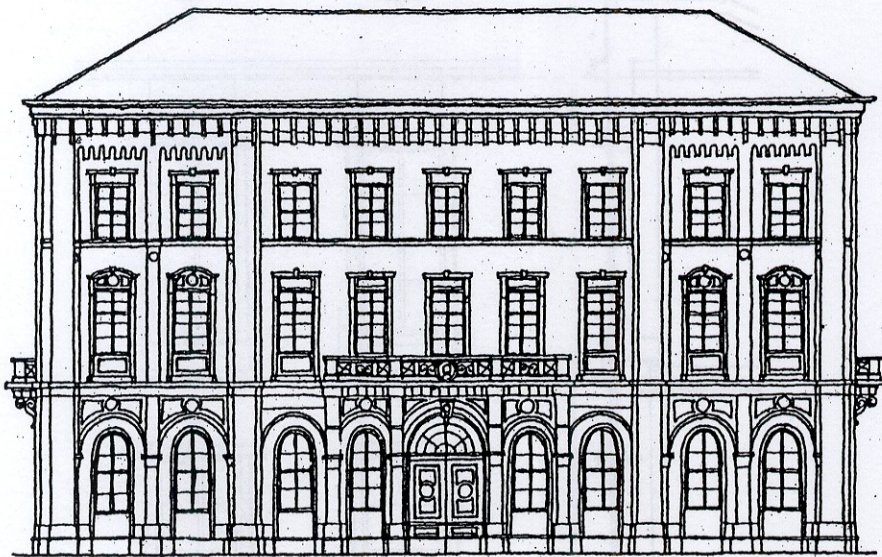
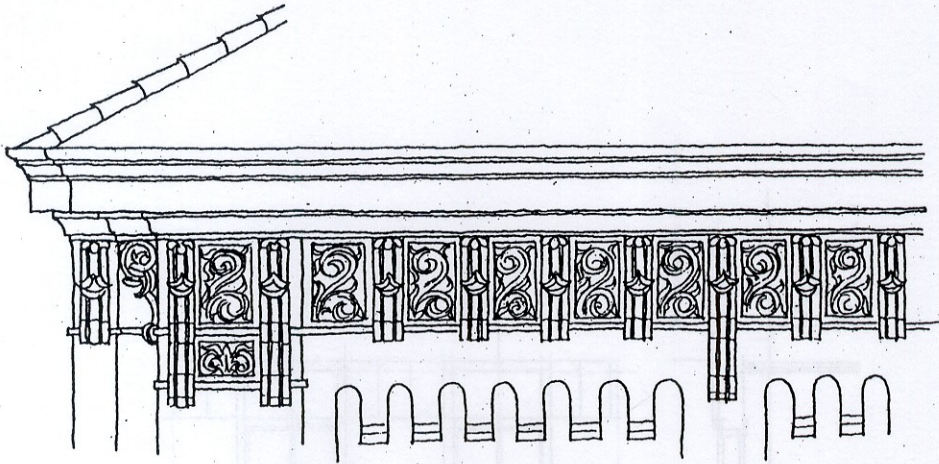
79

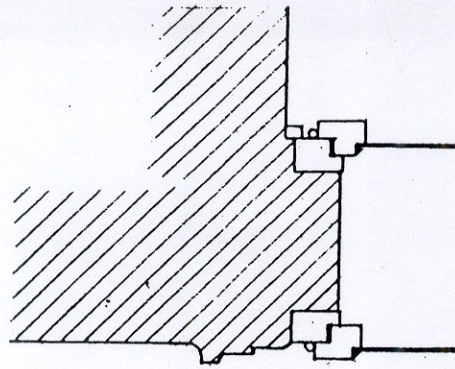


Alap Erősítőgerendék

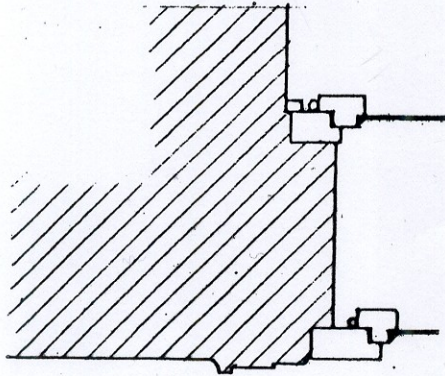




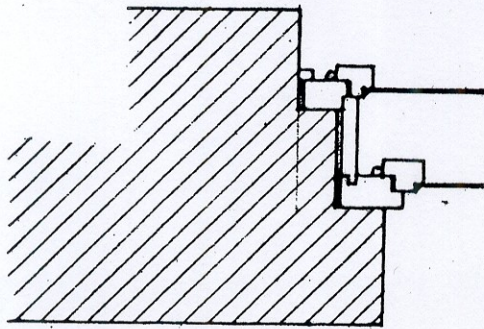




Klasszicista és romantikus



Korai eklektikus



Eklektikus

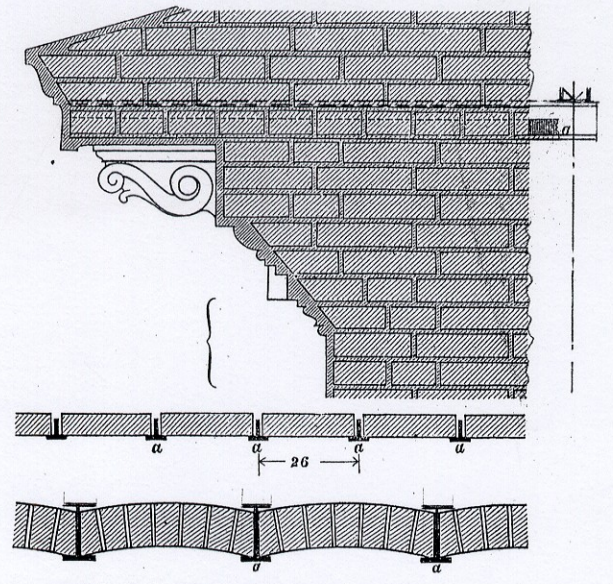
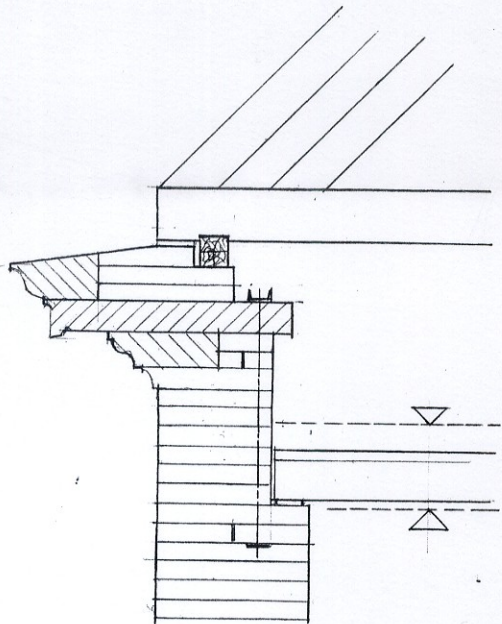
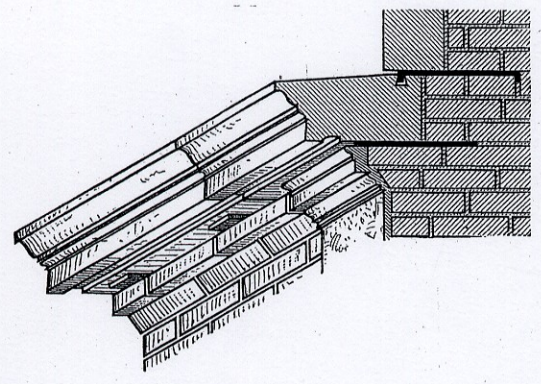
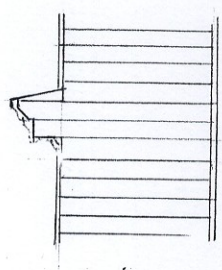
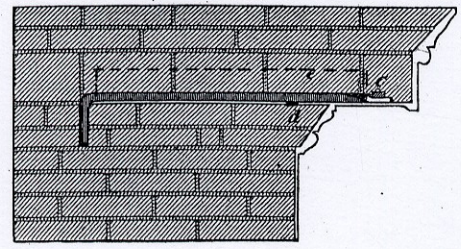
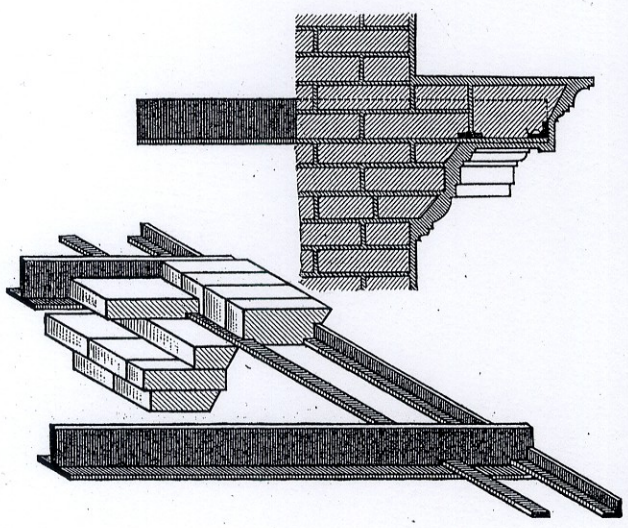
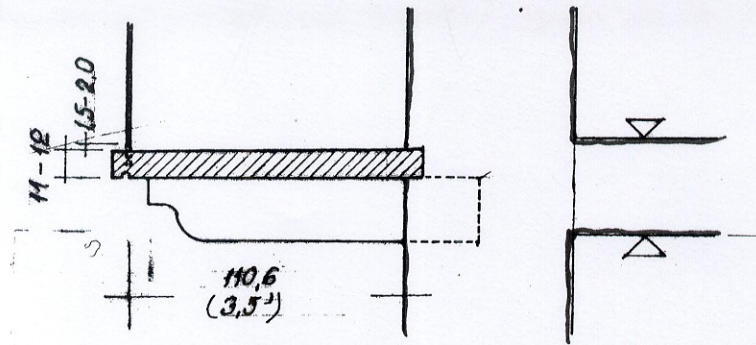
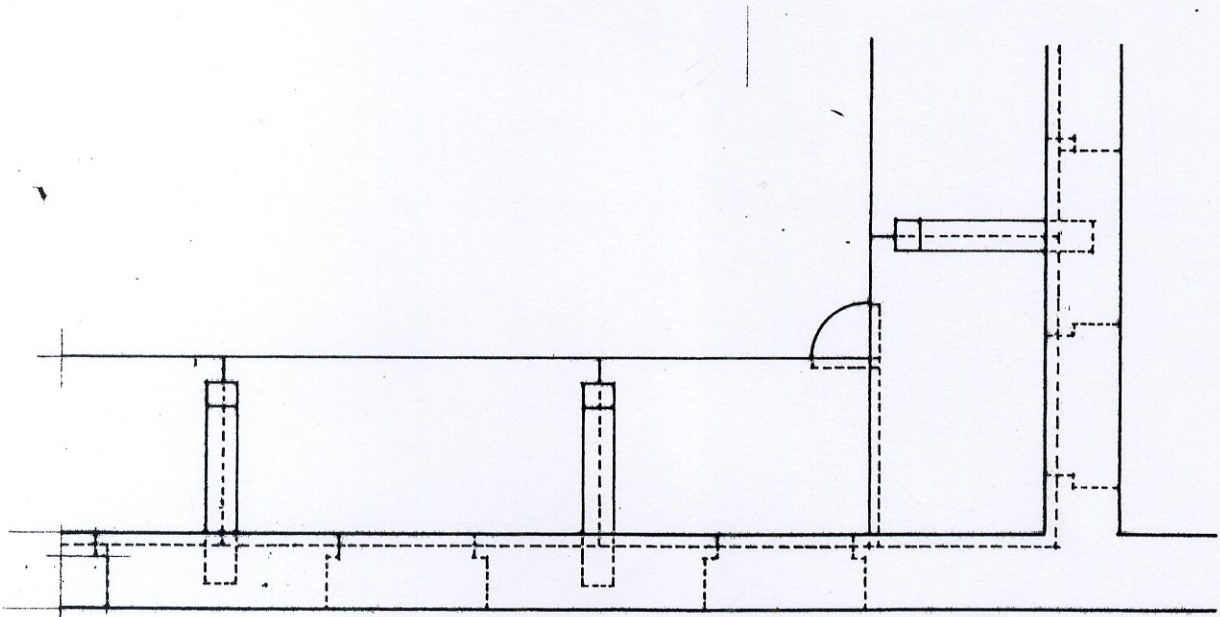


Fig. 322.

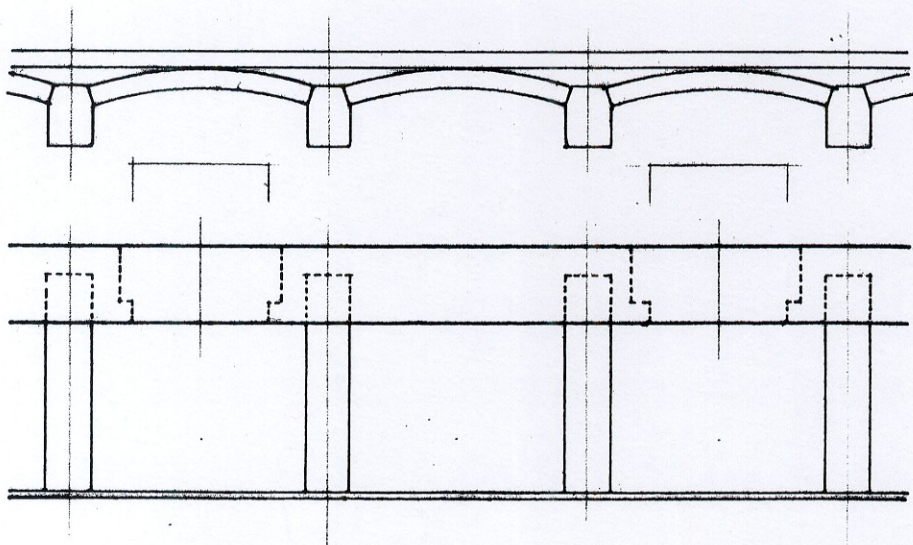




4.1

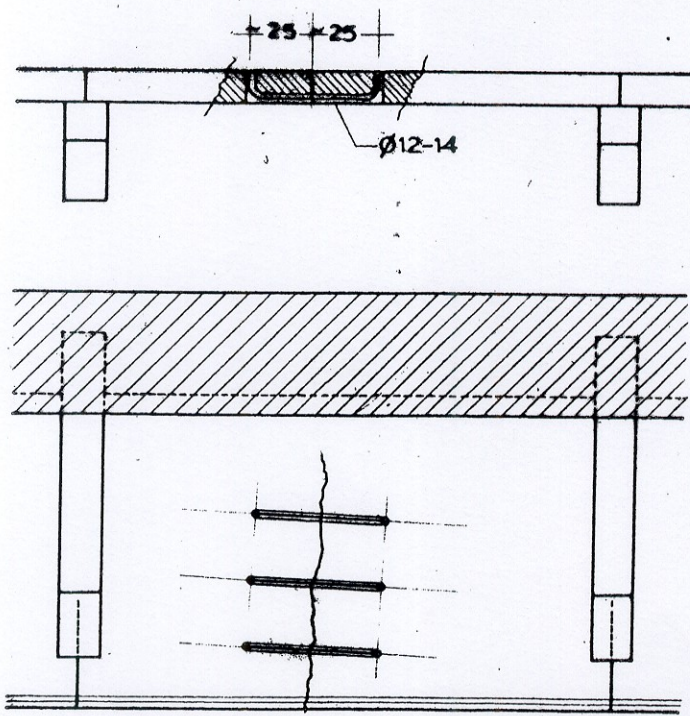


4.2

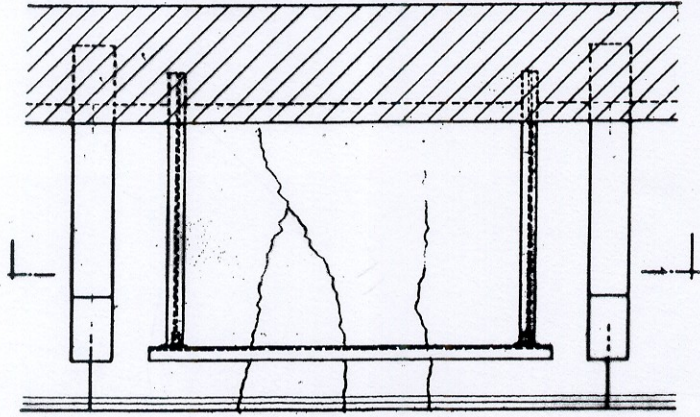
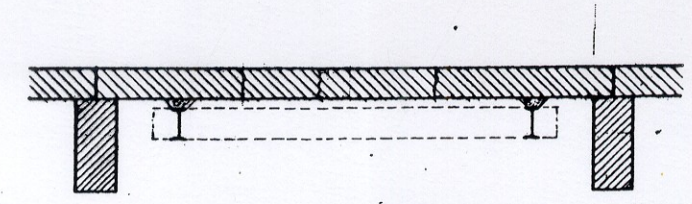


43

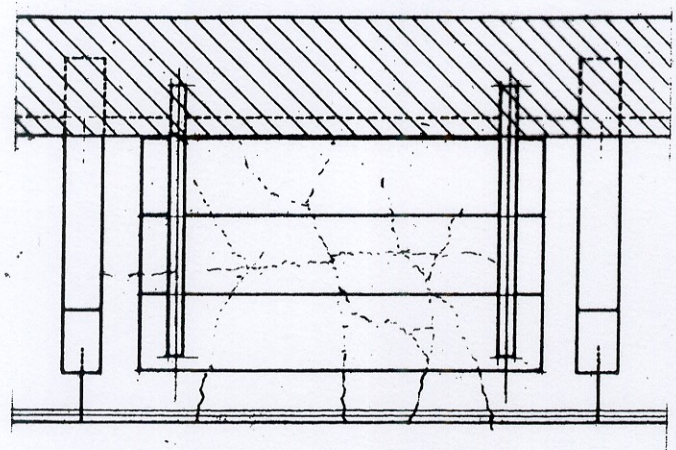
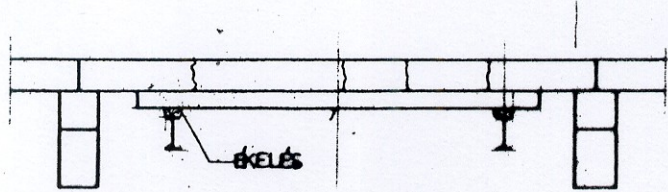
43



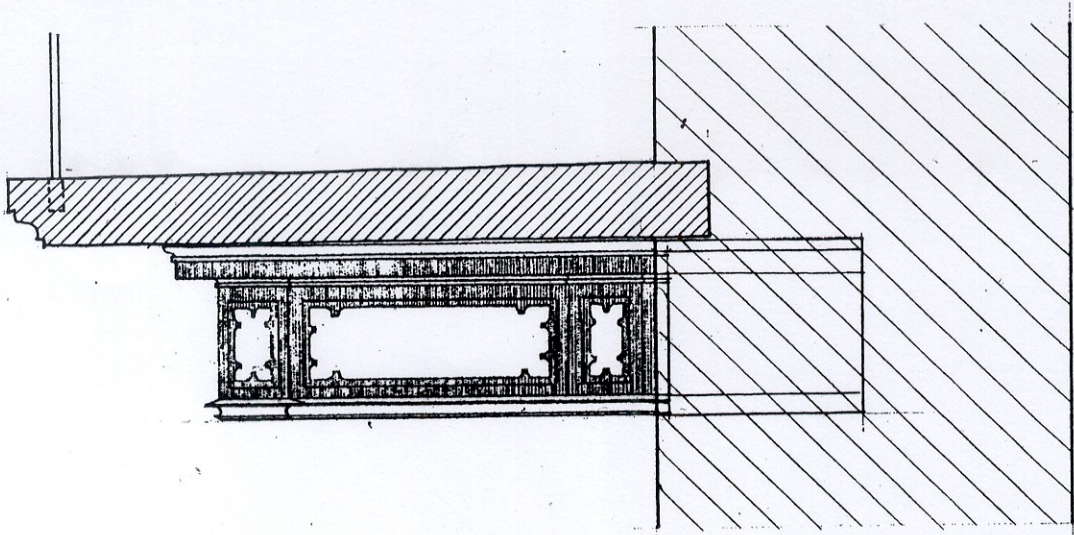
4.02.



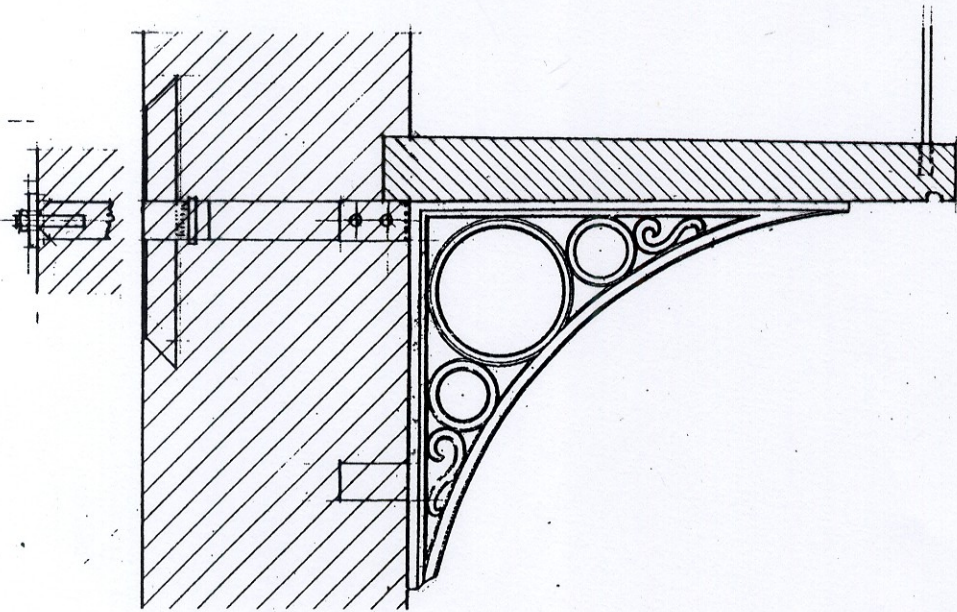
4.13



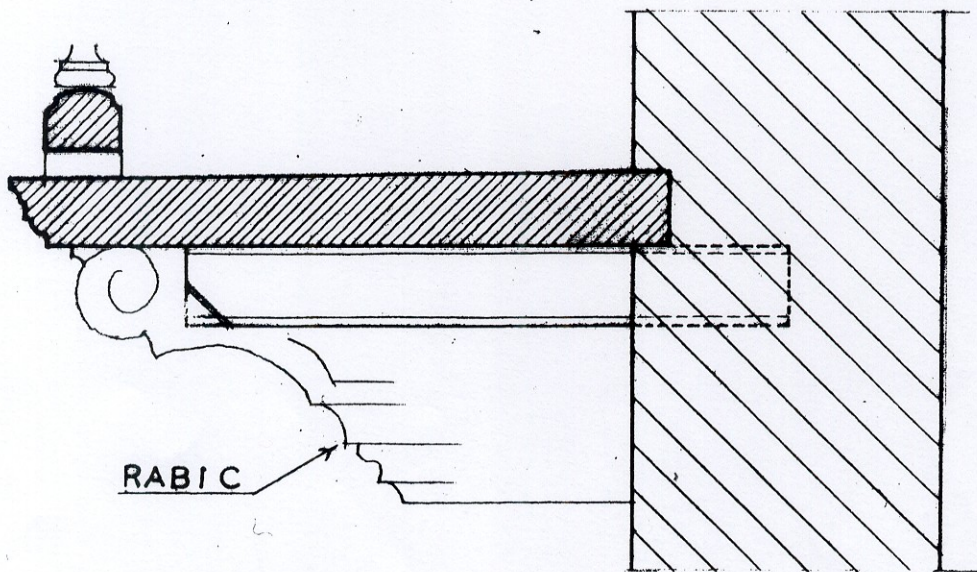
4.14



4.4

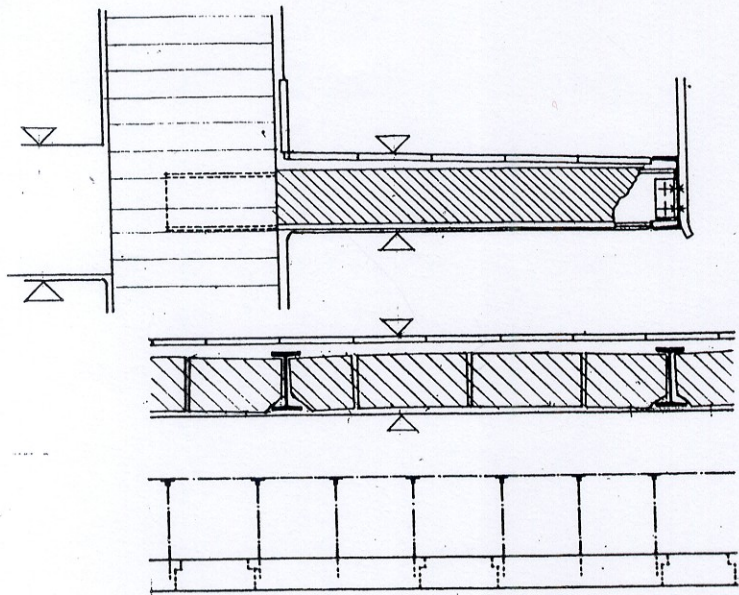


4.5

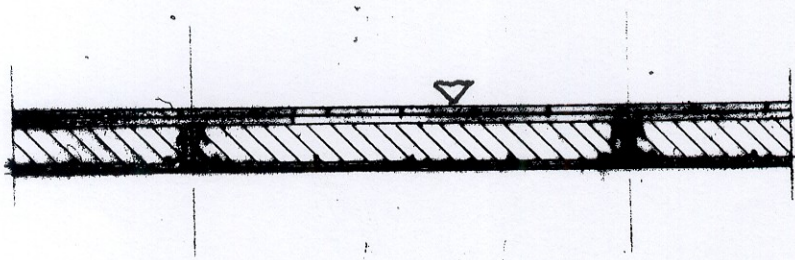


4.6

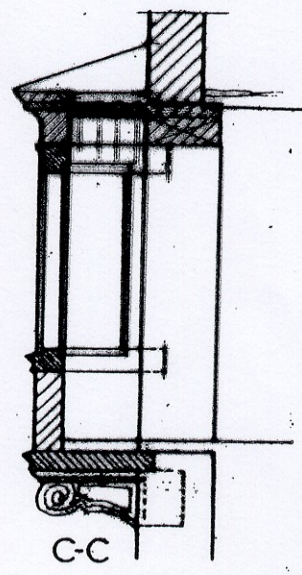
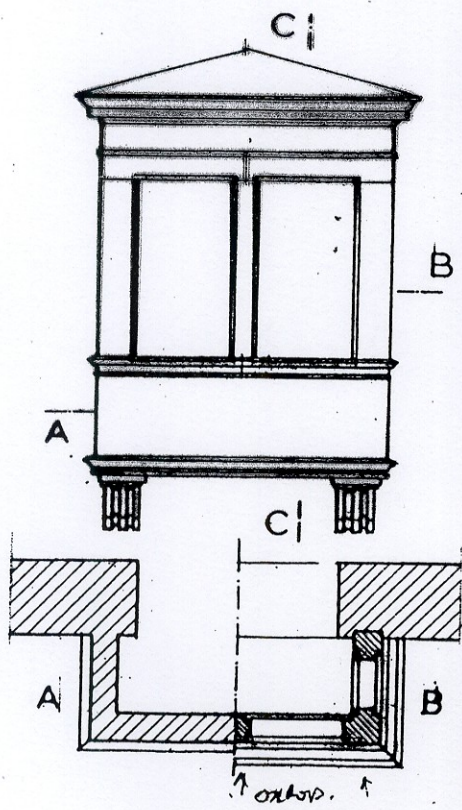
46

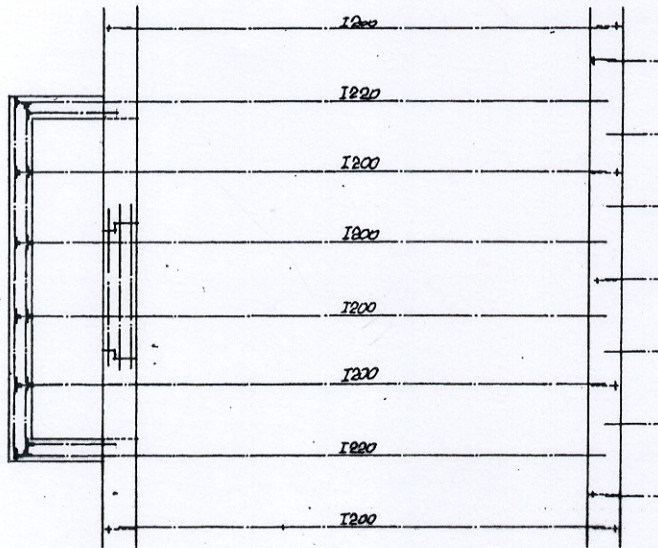


7.4

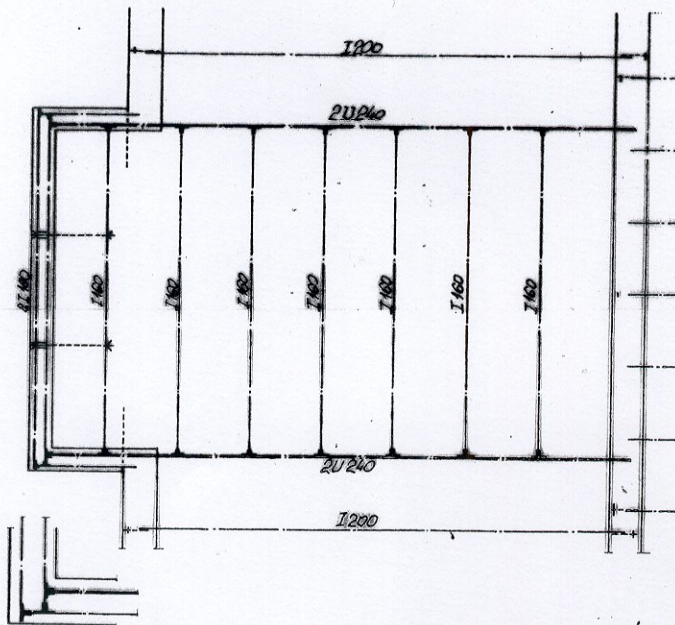


8.4



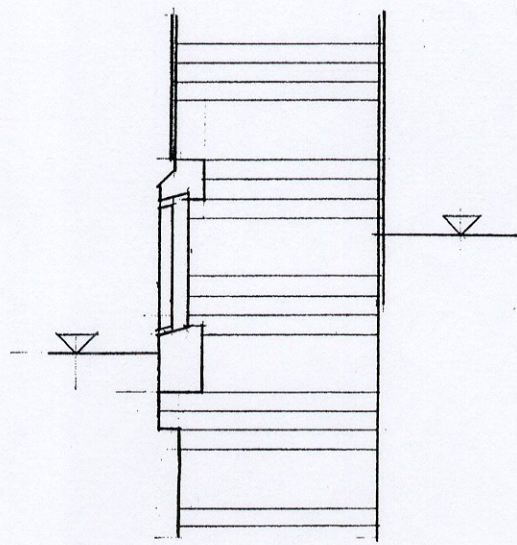
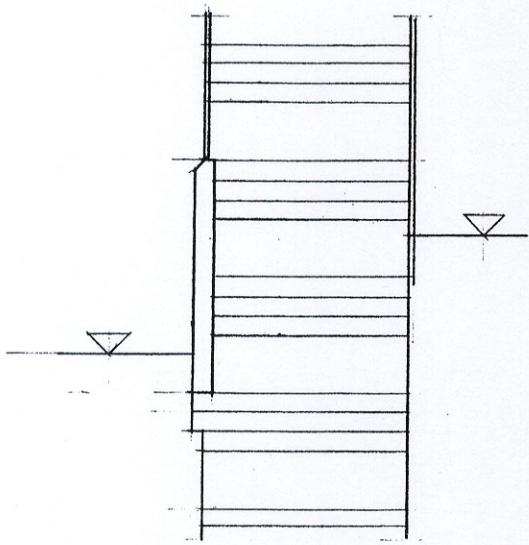


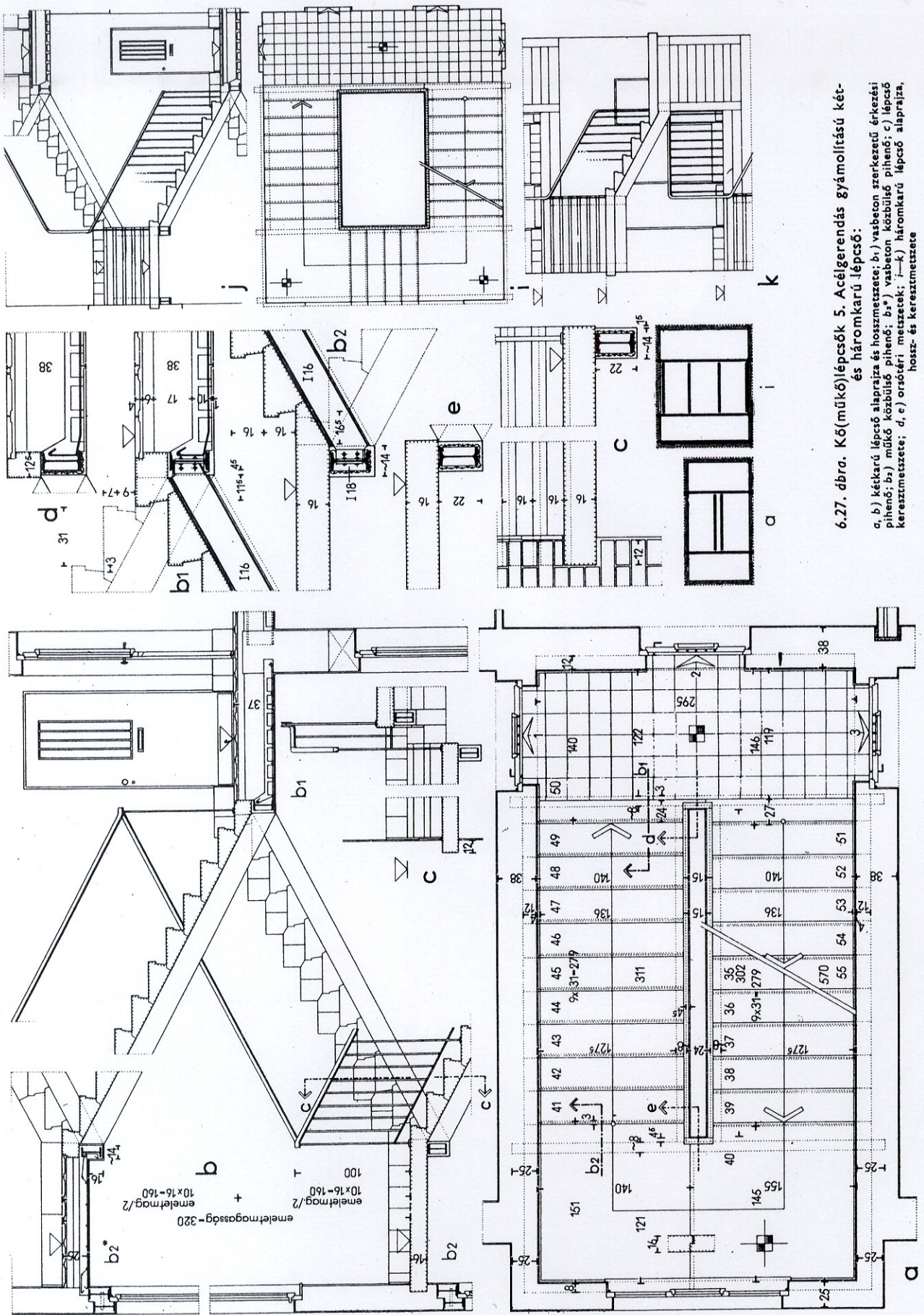
4.11.A



4.11.B

Handwritten text, possibly a title or identifier, located at the top right of the page.

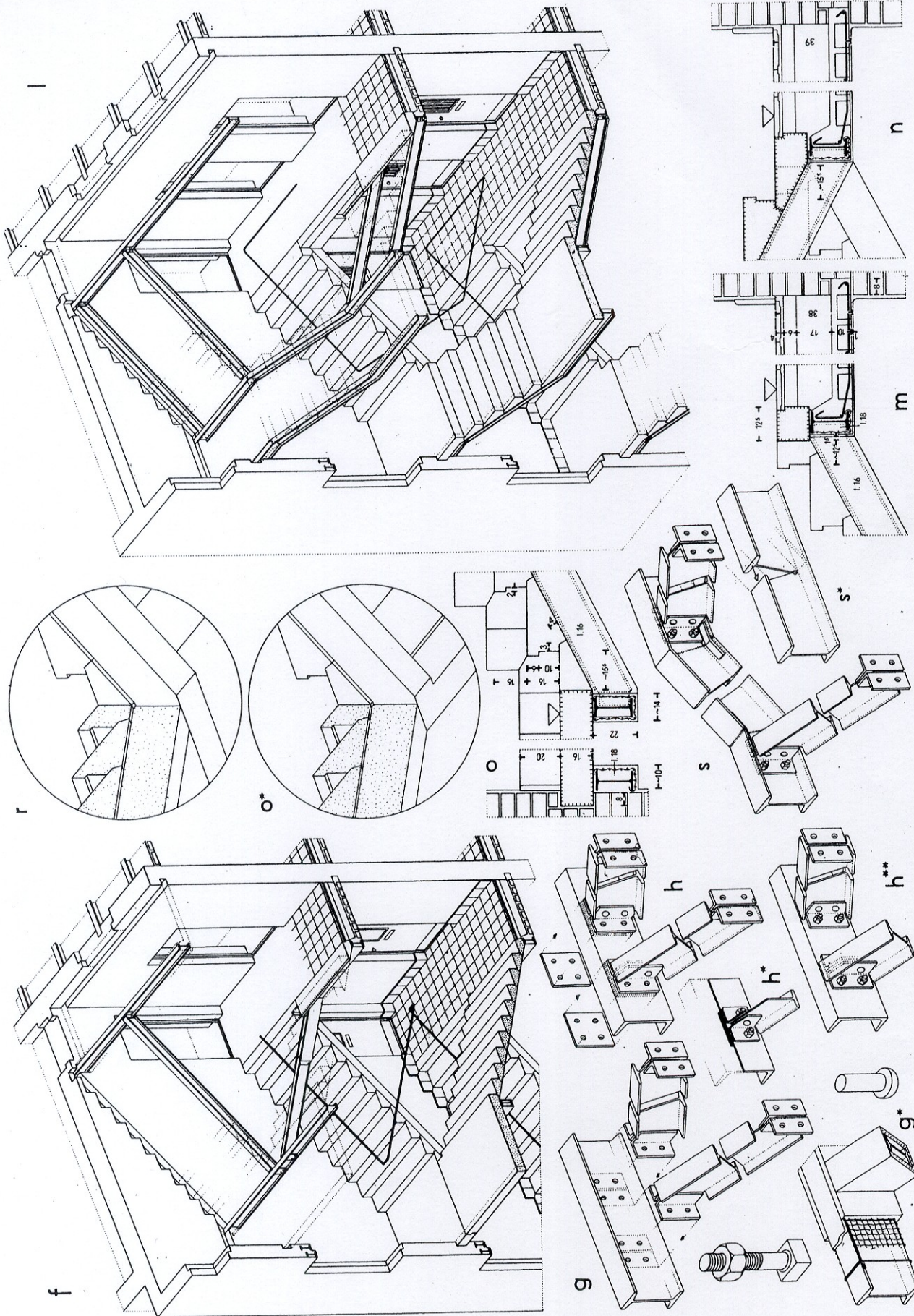




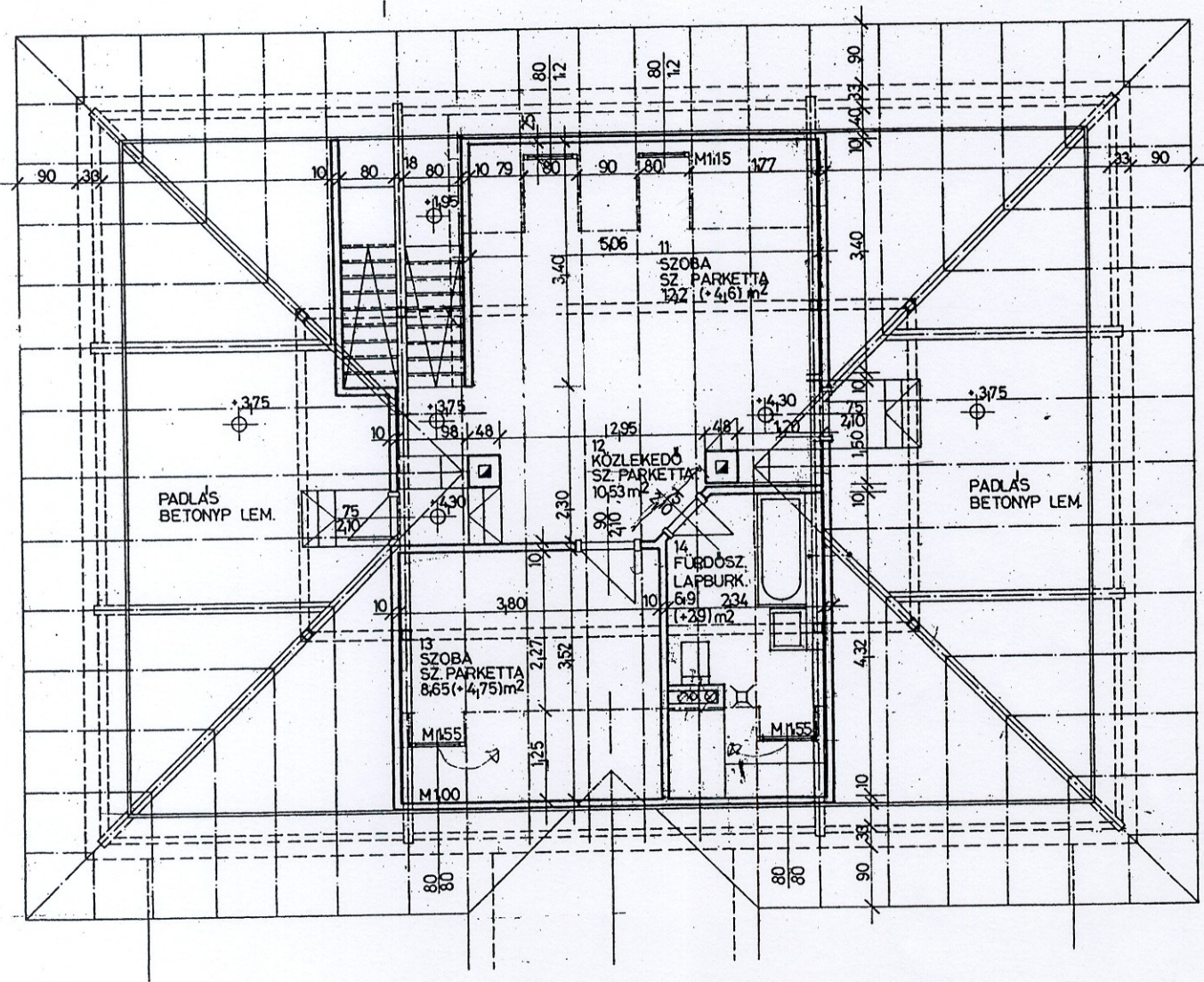
6.27. ábra. Kő(működő)lépcsők 5. Acélgerendás gyámláltású két- és háromkarú lépcső:
 a, b) kétkarú lépcső alaprajza és hosszmetrétze; b¹) vasbeton szerkezetű érkezési pihenő; b²) működő közbúlsó pihenő; b³) vasbeton közbúlsó pihenő; c) lépcső keresztmetrétze; d, e) orsóterei metszettek; i-k) háromkarú lépcső alaprajza, hossz- és keresztmetrétze

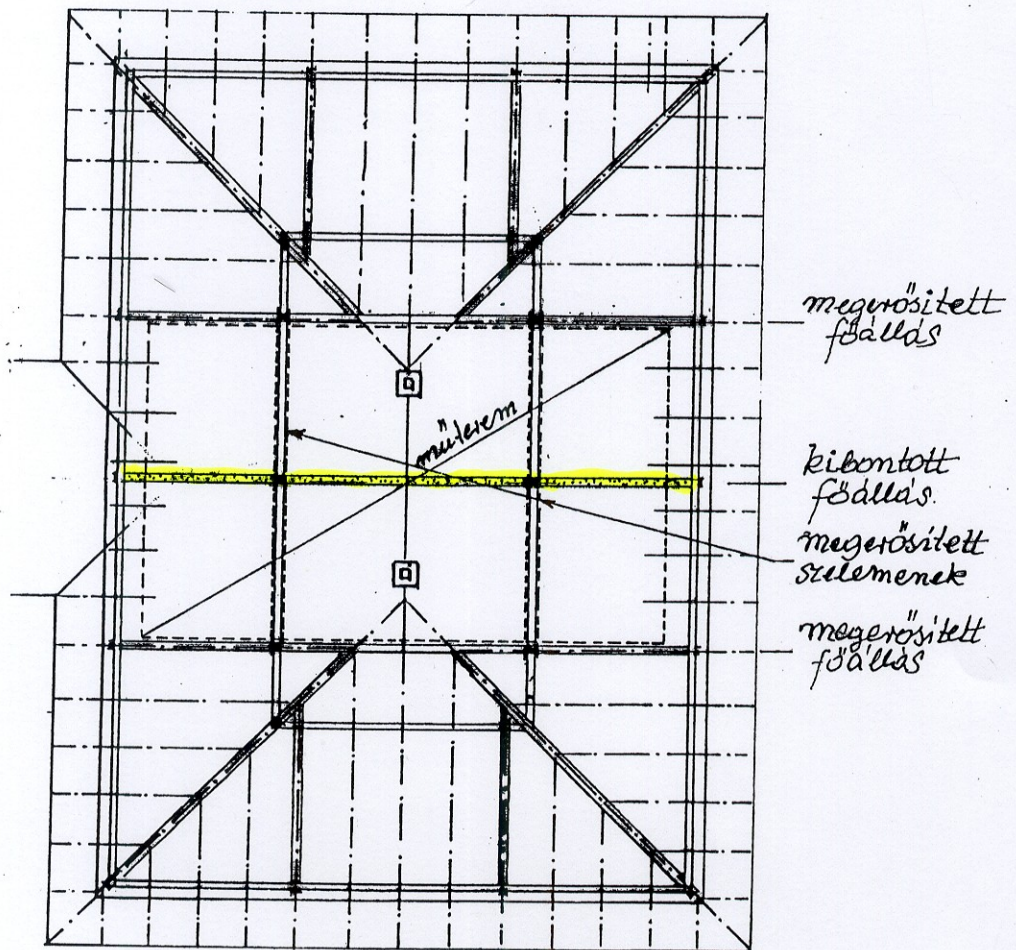
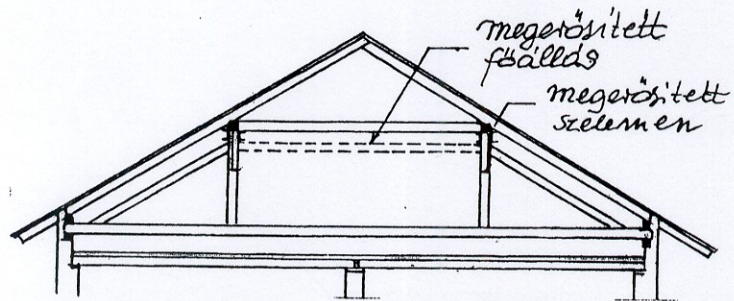
Gábor Labzó: Épületelemek I.

49



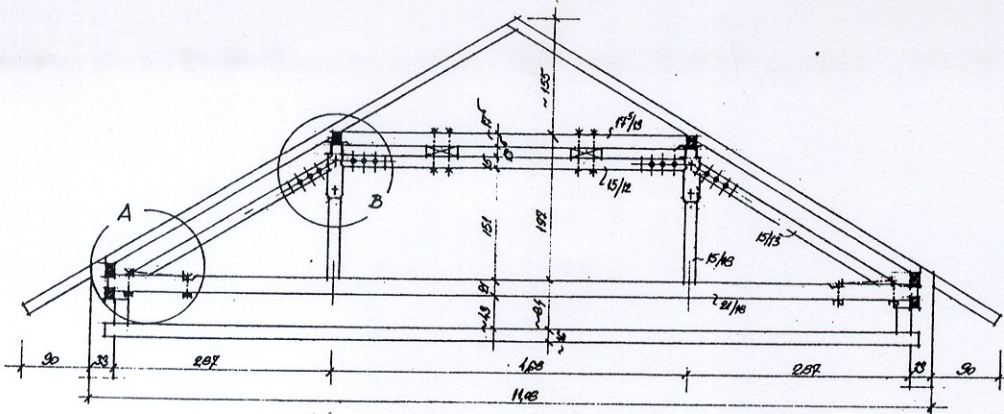
6.28. ábra. Két- és háromkarú lépcsők 6. Acélgerendás gyámoilltású két- és háromkarú lépcsők: f) a kétkarú lépcső axonometrikus képe; g, h, h*, h** a kétkarú lépcső acélgerendáinak szerelési csomópontjai; i) háromkarú lépcső axonometrikus képe; m, n, o, o*, r) pihenő-csomópontok; s) a háromkarú lépcső acélgerendáinak szerelési csomópontjai; s*) az acélgerenda kivágása hajlításhoz





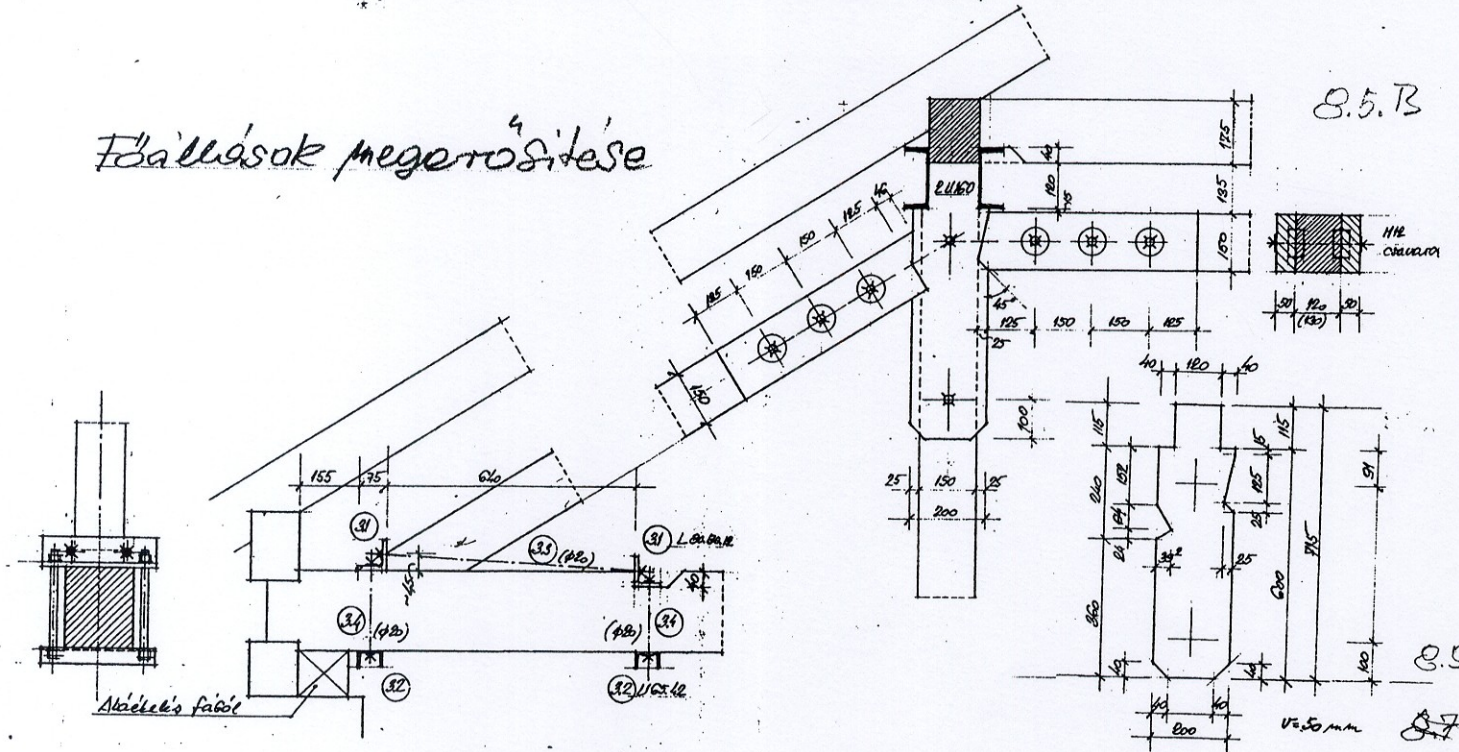
8.6
8.4

8.5.A

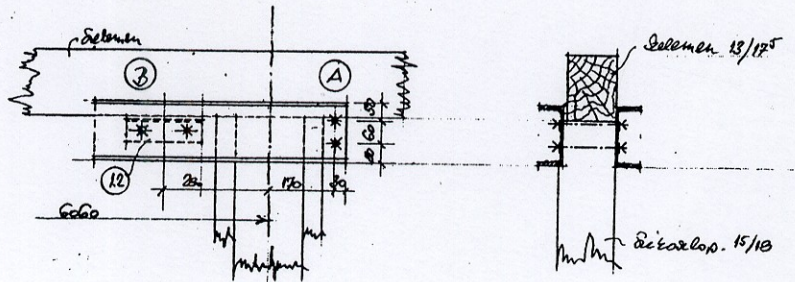
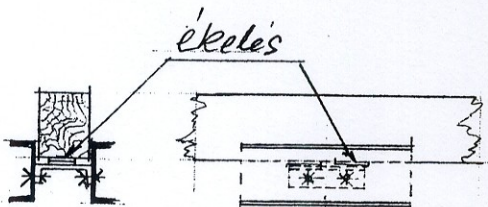
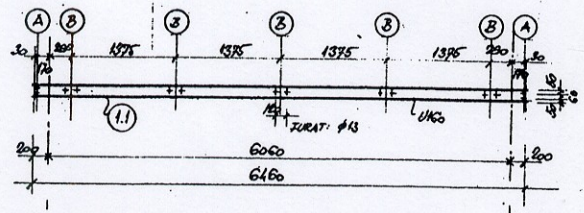


Falrészek megerősítése

8.5.B

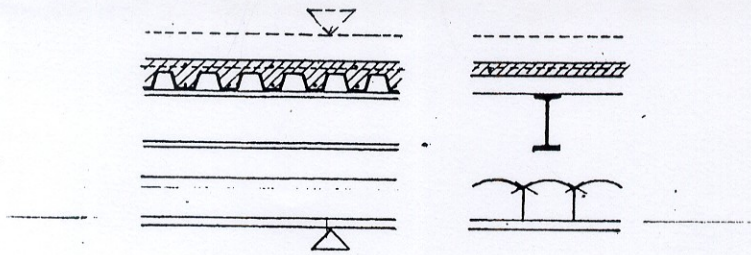


Szelemenek megerősítése

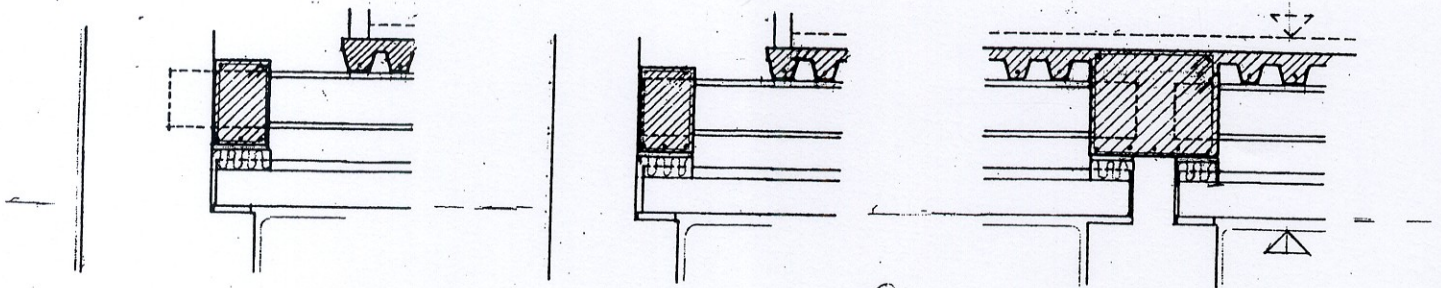


8.8

8.6

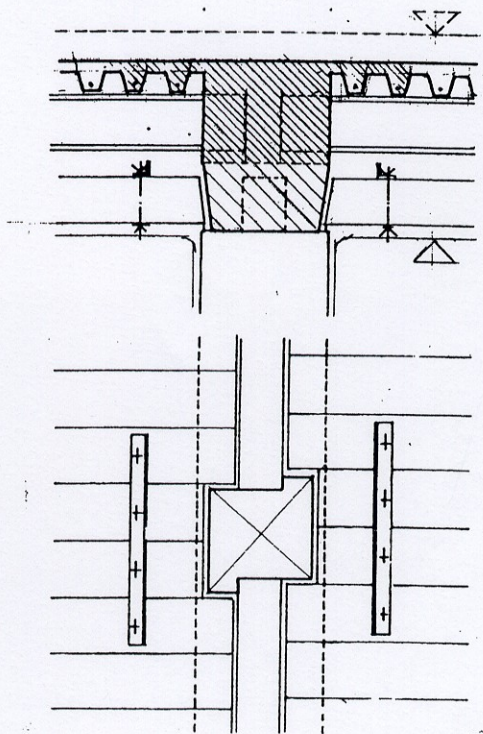
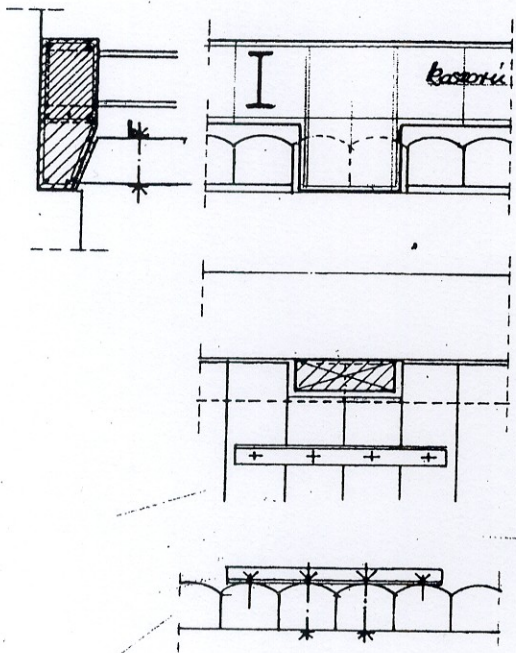


81



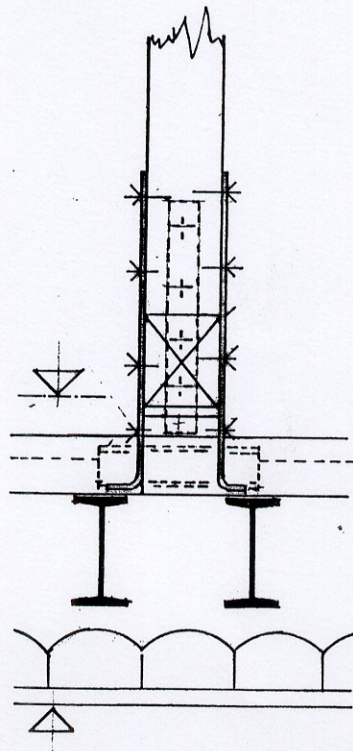
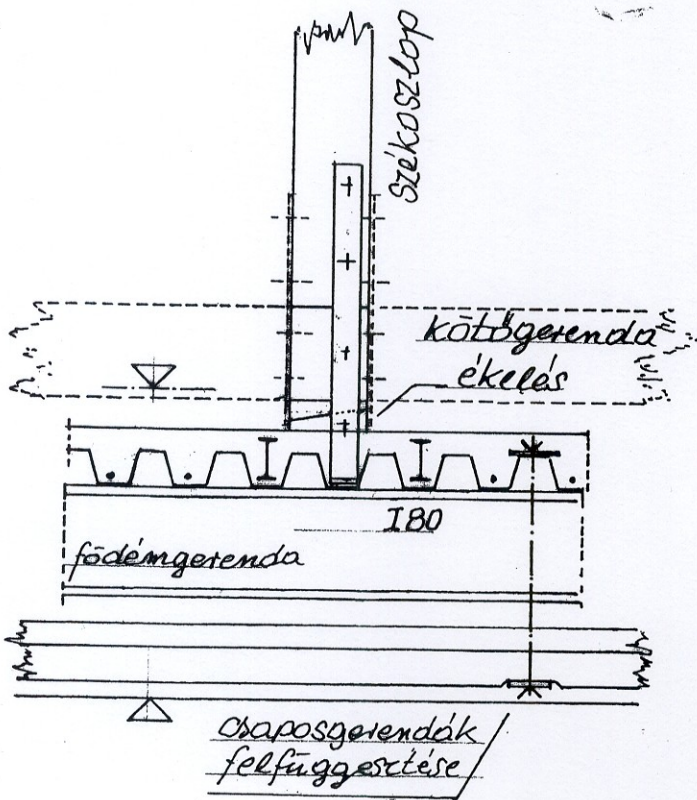
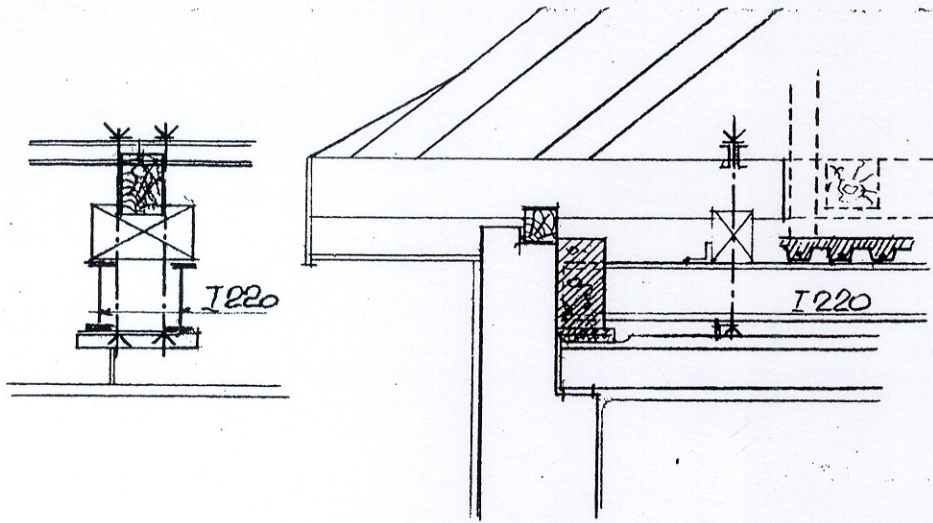
8

82

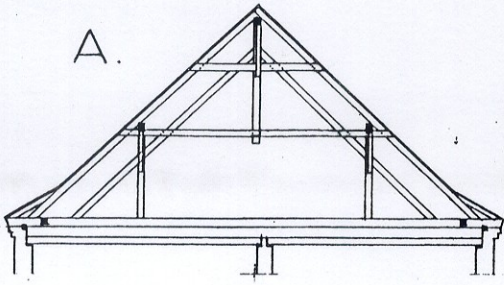


83

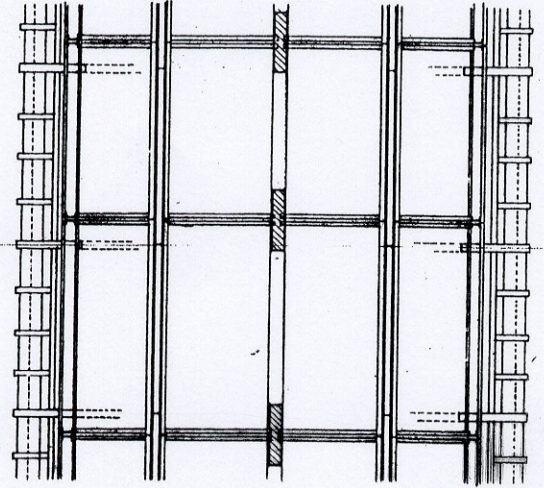
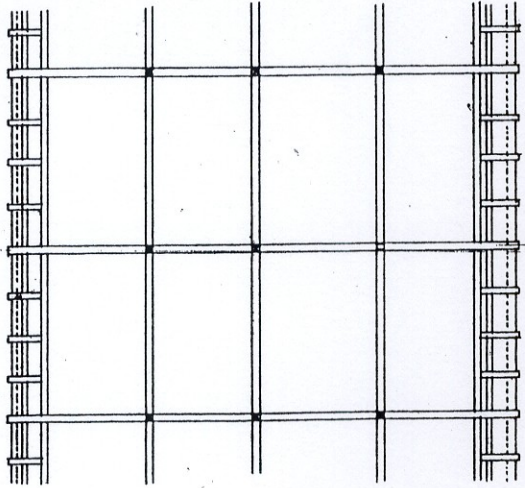
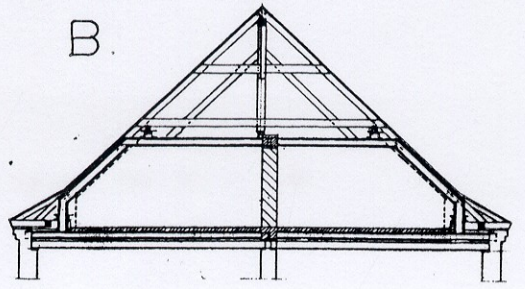
59



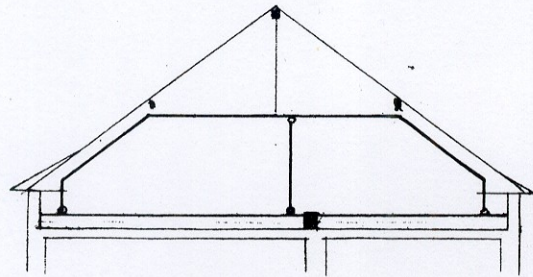
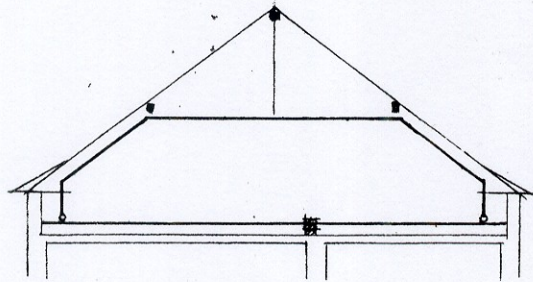
A.



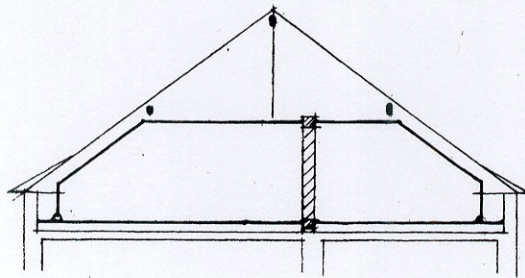
B.

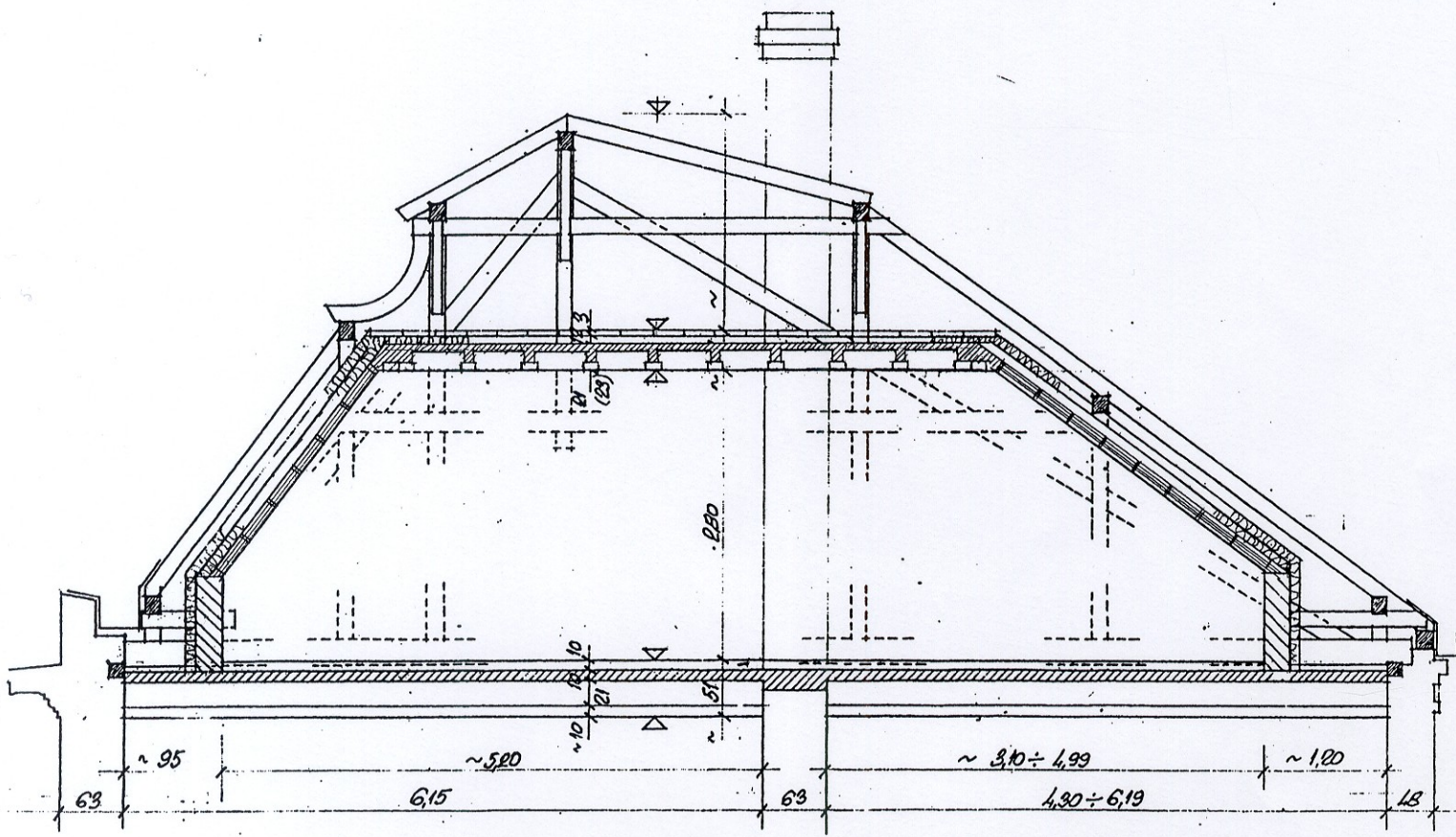


B.11



B.12





63 ~ 95 ~ 5.20 ~ 1.20 ~ 3.10 ÷ 4.99 ~ 1.20
6.15 63 4.20 ÷ 6.19 1.20